

Katalapi Park



This is a private park of about 30 Ha. of native evergreen temperate rain forest devoted to research and environmental education. The park facilities include laboratory, classroom, dormitories, camping, a quincho (rustic dining room), trails for scientists and ecotourists, and a canopy. Internet access via Wi-Fi is also available. The park is located in Pichiquillaípe, Carretera Austral, 18 Km from Puerto Montt.

<http://www.parquekatalapi.cl>



Contact the organizers at:
lebravo@udec.cl

Telephones: (56-41) 2661032;
(56-41)-2203586; (56-41) 2203418



Internacional
Graduate Course

Ecophysiology of Photosynthesis: Theoretical and Practical Approaches



Professors:

Internationals

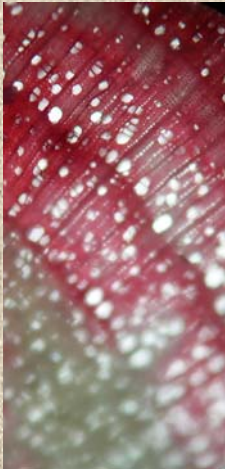
- Jaume Flexas (U. Illes Balears)
- Adrienne Nicotra (ANU)

Nationals:

- Claudio Pastenes (U. de Chile)
- Hernán M. Cabrera (PUCV)
- Rafael Coopman (UACH)
- Alfredo Saldaña (UdeC)
- León A. Bravo (UdeC)

January 4-15 2010, Katalapi Park
Pto. Montt-Chile.

Description of the course



This intensive theoretical-field course for graduate students spans two weeks, including lectures, seminars, and practical classes in the field. The course will utilize the Katalapi Park facilities to develop lectures, training in plant ecophysiological methods, and field sampling activities. The

field course is designed as an intensive immersion experience, and demands stamina, endurance, social skills and patience. We will study topics related to ecophysiology of photosynthesis in terrestrial plants.



Organizers:

Dr. León A. Bravo (lebravo@udec.cl)

Dr. Alfredo Saldaña (asaldana@udec.cl)

Dr. Luis Corcuera (lcorcuera@udec.cl)

Sponsored by:

Departamento de Botánica (UdeC)

Escuela de Verano (UdeC)

Instituto de Silvicultura, (UACH)

Parque Katalapi

Mecesup UCO0214

Fondecyt 1090397 (International Coop.)

Registration Information:

Contact any of the above organizers by e-mail or telephone: (56-4)-2661032/2203586/2203418

Registration fee and fellowships:

Students \$150.000 (US\$250); non students \$300.000 (US\$500). This fee includes registration, food and lodging, and course materials. A few fellowships are available.

Fellowships applications: lebravo@udec.cl



Topics:

- Photosynthesis: Light capture and carbon assimilation.
- Light availability gradient estimations and light capture models.
- Combined responses of photosynthesis and respiration to water stress.
- Regulation of carbon dioxide diffusion inside leaves.
- Environment and energy transduction, consequences for photoinhibition
- Photosynthetic limitations of evergreen fruit trees.
- Approaches in plant comparative ecology to the study of evolutionary ecology and ecophysiology of photosynthesis
- Ecophysiology of photosynthesis: an example of study in Mediterranean vegetation including regressive endemisms from islands.
- Sexes patterns of photosynthesis and resource allocation in dioecious plants